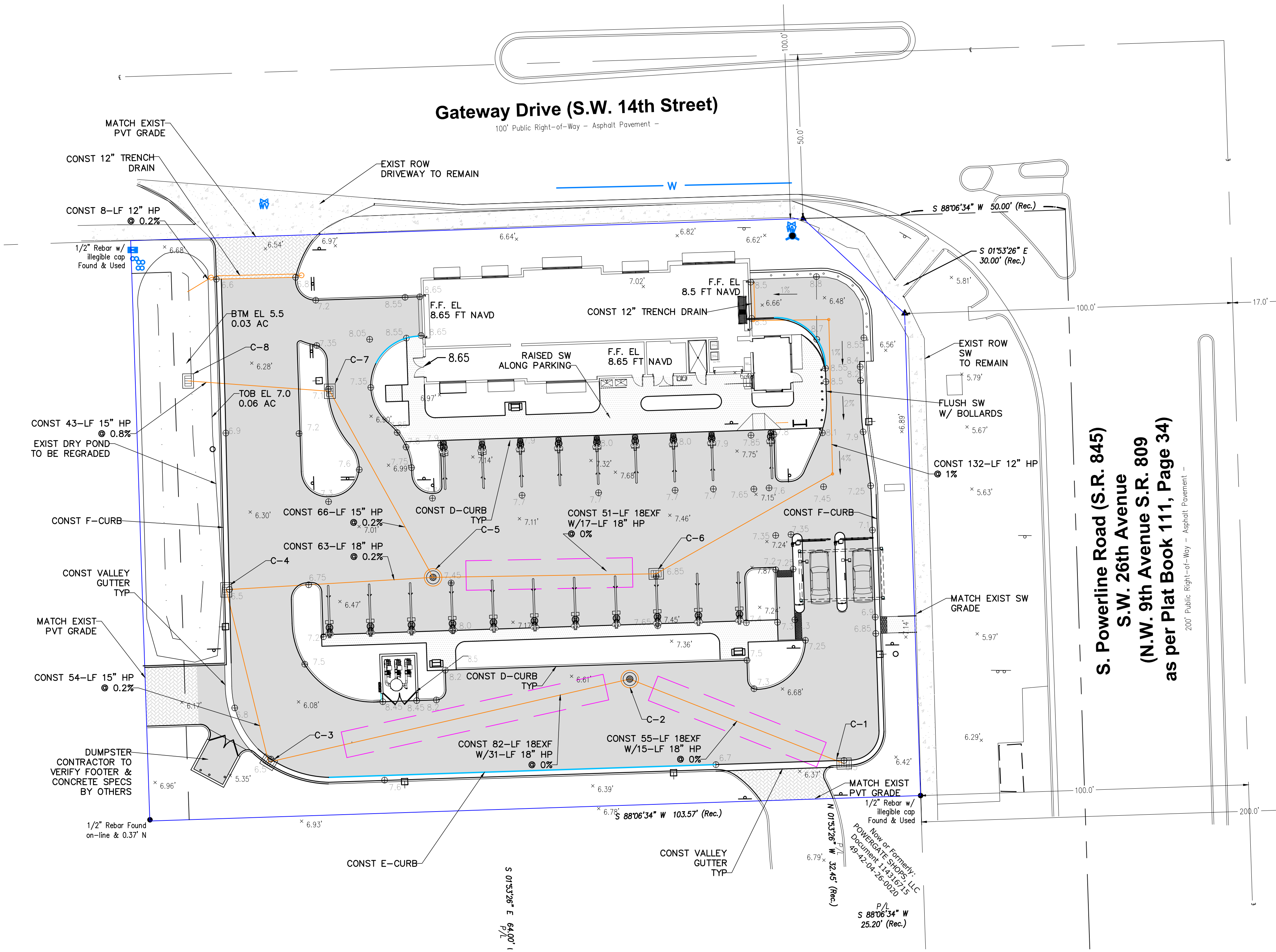
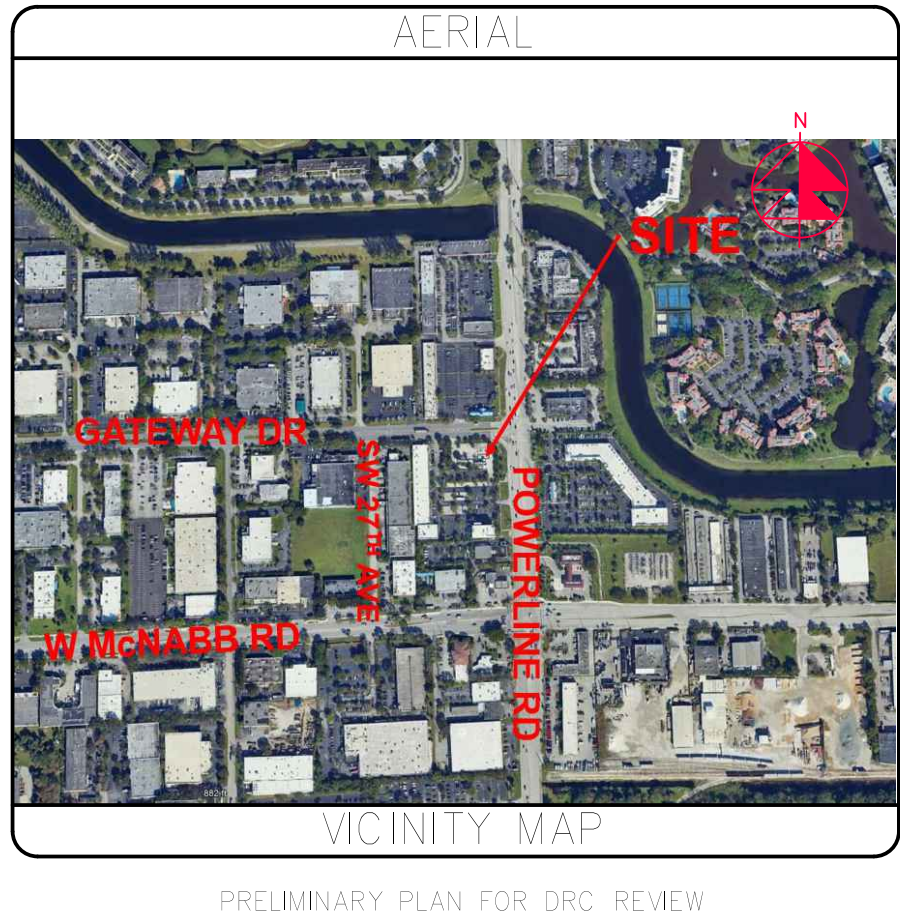
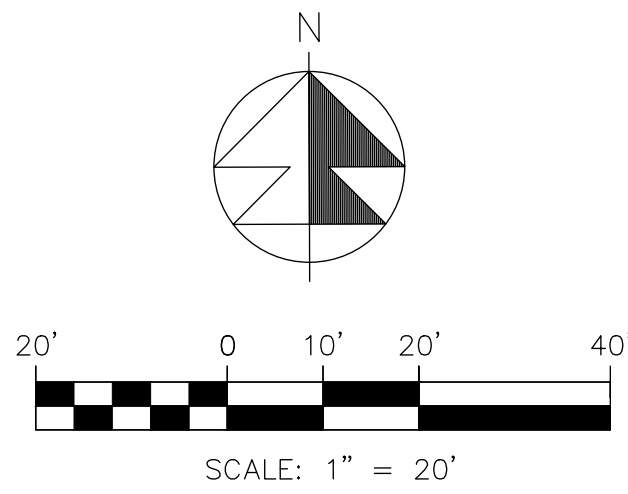
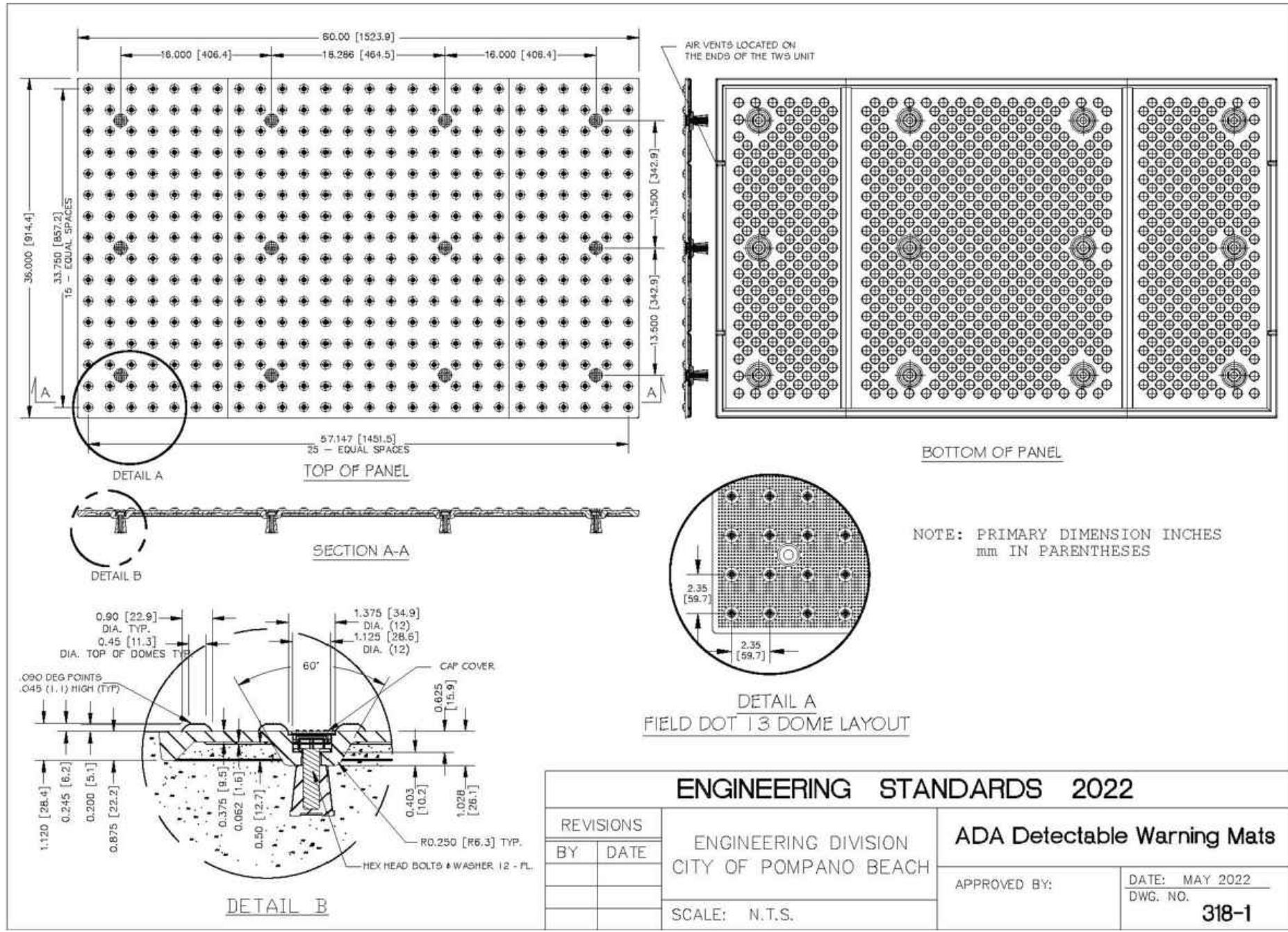


DRAINAGE STRUCTURE DATA:

- C-1  
"P-9" MANHOLE WITH 9 INLET TOP  
GRATE EL 6.5  
INV EL 2.5 W  
W/ BAFFLE
- C-2  
"P" MANHOLE  
RIM EL 6.8  
INV EL 2.5 W&E  
W/BAFFLES
- C-3  
"P-C" MANHOLE WITH -9 INLET TOP  
GRT EL 6.5  
INV EL 2.5 N&E (E BAFFLE)
- C-4  
"P-C" MANHOLE WITH -9 INLET TOP  
GRT EL 6.5  
INV EL 2.4 W&E&S

DRAINAGE STRUCTURE DATA:

- C-5  
P MANHOLE  
RIM EL 7.5  
INV EL 2.5 W,N,E (E BAFFLE )
- C-6  
P MANHOLE W/ C GRATE (ADA)  
GRATE EL 6.85  
INV EL 2.5 ( W BAFFLE)
- C-7  
P MANHOLE WITH TYPE 9 INLET  
GRT EL 7.1  
INV EL 2.3
- CB-8  
C INLET  
GRATE EL 5.5  
INV EL 2.0 (BAFFLE)



- CONST 6" CONCRETE
- CONST 4" CONCRETE
- STAMPED CONCRETE/ PAVER
- EXIST CONCRETE

Broward County Site Requirements  
Broward County 100 year flood map 2060: 8.5 ft NAVD  
Broward County 2070 Future Water Table: 2.5 ft NAVD  
100 yr and 25 post stages to be at or less than pre stages

- NOTES:
- ALL EXIST INFO & TOPO ARE PER CBRE PROJECT # 58525, DATED APRIL 18TH, 2024. ALL SURVEY GRADES ARE IN NAVD 1988 PER TOPOGRAPHIC NOTES FROM SURVEYOR.
  - ALL INLET GRATES SHALL BE USF HEAVY DUTY LOADING /AE.
  - THE CARWASH RUNOFF SHALL BE CONTAINED INSIDE THE BUILDING AND WILL BE DISCHARGED TO THE RE-USE TANK AND/OR OIL SAND SEPARATOR. NO CARWASH RUNOFF WILL BE DIRECTED OUTSIDE OF THE BUILDING TO THE CATCH BASINS.
  - ACCESSIBLE ROUTES INCL SW'S, HANDICAP RAMPS & DET WARNINGS SHALL CONFORM TO 2010 US DOJ "STD'S FOR ACCESSIBLE DESIGN", FBC CHAPTER 11, & FDOT INDEX 522-002.
  - CONTRACTOR SHALL PROTECT ALL INLETS & SITE PERIMETERS DURING CONSTRUCTION PER FLORIDA STORMWATER, EROSION, & SEDIMENTATION CONTROL INSPECTORS MANUAL. \* ABOVE THE EDGE INLET GRATE & D-CURB
  - CONTRACTOR SHALL COORD W/ UTILITIES TO ADJUST ALL EXIST UTILITY FACILITIES TO PROP GRADES INCL FPL, ATT, COMCAST, WATER & SEWER VALVES AND METERS
  - GRT EL OF "-9" INLETS ARE THE LOWEST EOP ELEV.
  - ALL LANDSCAPE PLANTING AREAS SHALL BE FREE OF SHELL ROCK AND CONSTRUCTION DEBRIS, EXCAVATED TO A DEPTH OF 30 INCHES OR TO CLEAN NATIVE SOILS AND FILLED WITH SUITABLE PLANTING SOIL MIXTURE.
  - ALL PERVIOUS SLOPES AT 4H:1V OR GREATER SHALL HAVE TURF REINFORCEMENT MAT LAND LOK 450/ APPROVED EQUAL.
  - ALL 18" DRAINAGE PIPE SHALL BE RCP OR H.P. STORM(GREY PIPE). CONTRACTOR SHALL SUBMIT SHOP DRAWINGS FOR DRAINAGE STRUCTURES AND PIPE FOR REVIEW BY EOR, SBDD AND CITY(AS REQUIRED)
  - ALL SIDEWALKS SHALL NOT EXCEED 5% LONGITUDINAL SLOPE, OR 2% CROSS SLOPE. CURB RAMPS MAX LONGITUDINAL SLOPE SHALL NOT EXCEED 8.3% ADA PARKING AND ACCESS AISLES MAX 2% BOTH DIRECTIONS.
  - SEE SHEET C-7, CONCRETE SPECIFICATIONS, FOR MINIMUM PSI FOR C CONCRETE WORK. CONTRACTOR TO SUBMIT MIX DESIGNS PRIOR TO POUR.